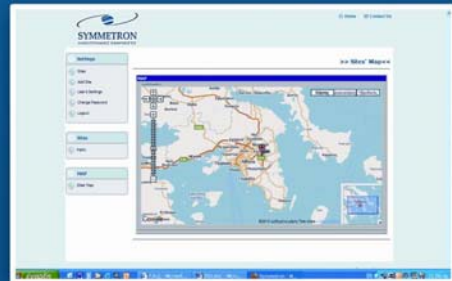
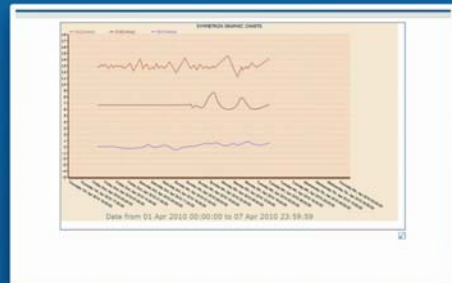


# Captum

## Web real-time data logger monitoring



# Captum

## REAL-TIME DATA LOGGER MONITORING ON THE WEB

Captum makes it easy to set up a real-time web page presenting data logger measurements. Both measurement data and logger status are available.

Captum may be configured to allow either private or public access to measured data.

This is a service created and supported by Symmetron. It is free to Stylitis data logger users.

For frequent updating it may be used with Diameson, Symmetron's GPRS gateway server.

### DATA LOGGER COMPATIBILITY

- **Stylitis-10** (all versions).
- **Stylitis-Power.**
- **Stylitis-41** (Sym-o-net required for GPRS)
- **Stylitis-101** (Sym-o-net required for GPRS)
- **Stylitis-50**

### INTEGRATED SYSTEM

Part of a complete system, Captum collaborates with:

- **AutoConnect** – automatic connection and download software.

[For detailed specs please refer to individual product data sheets.](#)

### FEATURES

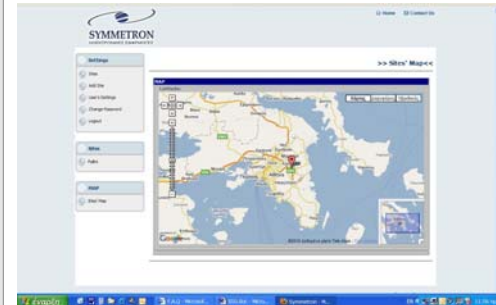
- Site information includes description, data logger credentials, photo, and longitude and latitude. Geographical location may be selected on map.
- Sites may be selected by name or clicking on a map.
- Users may view latest acquired data and status.
- Users may generate a plot between a range of dates. The plot is updated in real-time.
- Captum also supports applications where data logger data are destined to be freely available to open public. Public sites are only available for viewing.
- Compatible with standard Internet browsers (IE, Firefox, etc.)

### CONFIGURATION

Captum is configured in 3 steps:

- The first step requires that users register their data loggers by serial number in Captum. Users may personalize site appearance by adding photos and descriptions. They can even add their own logo.
- The second step is configuring the data logger for the connection method between the logger and their computer. This may be a wired connection (Ethernet, RS-232) or a wireless connection (GSM, GPRS).
- In the final step, users will set up a suitable AutoConnect connection in their computer with desired update rate, for instance every 15 minutes.

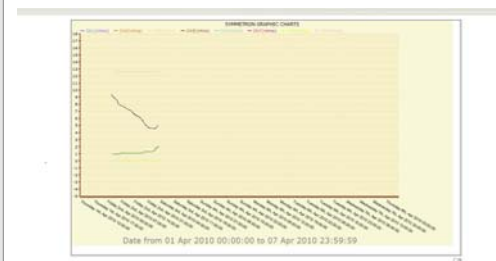
Then, data logger measurements are available, via a web browser, anywhere in the world.



Map



Site view



Real-Time Plot