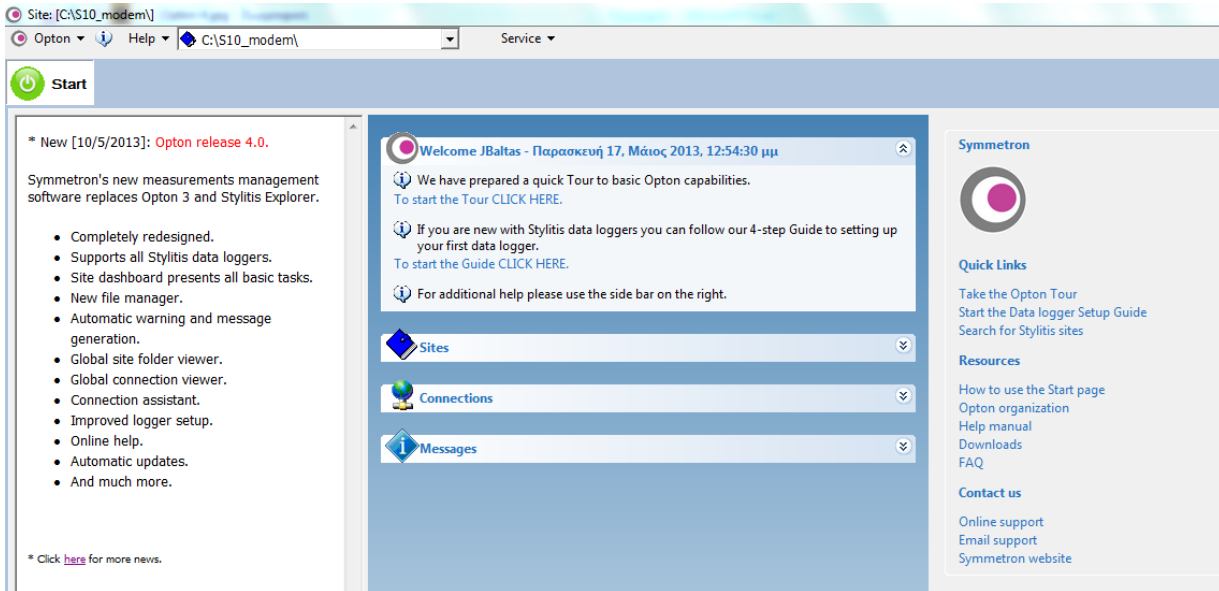


# Opton 4

## DATA LOGGER OPERATING SOFTWARE

User friendly operating software for communication with Symmetron's Stylitis data loggers, data file download and offline data management.



### MAIN FEATURES

- Data logger communication.
- Data logger programming.
- File manager.
- Message viewer.
- Data file integrity check.
- Data file plot and statistics.
- Global Site management.
- Global Connections management.
- Supports all Stylitis data loggers.

## Global review of sites

Name	Type	State	User	Tag	File#	Start Date	End Date
100_310113_144451.dab	Stylitis Compressed File		0	3	31/1/2013 14:44:51		
100_310113_144451.dxt	Stylitis Data File		2/2/2013 13:38:49	0	3	31/1/2013 14:44:51	31/1/2013 15:19:58
100_310113_144451_Energy.dxt	Stylitis Data File	<input type="checkbox"/>	0	2557	31/1/2013 14:44:51	31/1/2013 15:19:58	
100_310113_144451_TotalEnergy.dxt	Apxeio DXT						
ABCD_191009_085105(1).dsc	Stylitis Check File						
ABCD_191009_085105(1)_Dropouts.dxt	Apxeio DXT						
ABCD_191009_085105.dab	Stylitis Compressed File		0	2561	19/10/2009 08:51:05		
ABCD_191009_085105.dxt	Stylitis Data File	<input type="checkbox"/>	0	2561	19/10/2009 08:51:07	19/10/2009 08:52:24	
ABCD_191009_085105_Dropouts.dxt	Apxeio DXT						
ABCD_191009_085225.dab	Stylitis Compressed File		0	2562	19/10/2009 08:52:25		
ABCD_191009_085225.dxt	Stylitis Data File	<input type="checkbox"/>	0	2562	19/10/2009 08:52:25	19/10/2009 08:56:20	
ABCD_191009_085622.dab	Stylitis Compressed File		0	2563	19/10/2009 08:56:22		
ABCD_191009_085622.dxt	Stylitis Data File	<input type="checkbox"/>	0	2563	19/10/2009 08:56:22	19/10/2009 09:05:09	
ABCD_191009_093917.dab	Stylitis Compressed File		0	2565	19/10/2009 09:39:17		
ABCD_191009_093917.dxt	Stylitis Data File	<input type="checkbox"/>	0	2565	19/10/2009 09:39:17	19/10/2009 09:39:20	
ABCD_240912_183246.dab	Stylitis Compressed File		0	3	24/9/2012 18:32:46		
ABCD_240912_183246.dxt	Stylitis Data File	<input checked="" type="checkbox"/>	2/2/2013 13:38:45	0	3	24/9/2012 18:33:00	24/9/2012 18:46:00
ABCD_240912_183246_Dropouts.dxt	Apxeio DXT						
ABCD_240912_183246_Energy.dxt	Stylitis Data File	<input type="checkbox"/>	0	3	24/9/2012 18:33:00	24/9/2012 18:46:00	
ABCD_240912_183246_TotalEnergy.dxt	Apxeio DXT						
CurrentValues.txt	Stylitis Data File	<input type="checkbox"/>	0		29/2/2012 10:48:48	29/2/2012 10:48:48	

Review site weather and position on map, flagged sites, sites with messages, last connection and download, etc

## Global review of connections

Group	Project	Connection Name	Auto Time	Last connection	Last download	Status
		COSMOTE.dca	23:00			NotActivated
		6942069938.crm	Manual	11/12/2006 11:10:55		OK
		6949987170.crm	Manual	11/12/2006 11:29:24		OK
		xrist.crm	Manual			UnableToConnect
		Papadopoulos.crm	Manual	18/1/2007 18:48:56		OK
		351_7.crm	Manual	22/7/2008 10:29:01		OK
		Romania.crm	Manual	21/6/2007 12:23:54		OK
		6975853920.crm	Manual	6/3/2007 16:07:42		OK
		6975853919.crm	Manual	6/3/2007 16:00:38		OK
		6972883457.crm	Manual			UnableToConnect
		6942721834.crm	Manual	29/3/2007 10:50:12	29/3/2007 10:57:08	OK
		6942760113.crm	Manual			UnableToConnect
		6936502463.crm	Manual			NotActivated
		6973437475.crm	Manual			UnableToConnect
		6972069697.crm	Manual	31/5/2007 10:26:52		OK
		6937492853.crm	Manual			NotActivated
		6975850390.crm	Manual	20/6/2007 14:42:06	20/6/2007 14:44:14	OK
		6975865432.crm	Manual	25/6/2007 15:22:36		OK
		ita.crm	Manual			NotActivated
		et.crm	Manual	6/7/2007 10:53:54		OK
		6979801081.crm	Manual	9/7/2007 17:38:30		OK
		6937496214.crm	Manual	20/8/2007 15:47:59		OK
		Lan.cem	Manual			NotActivated
		Aport.cem	Manual			NotActivated
		Connection2.crm	Manual			NotActivated
		Vodafone.crm	Manual			NotActivated
		6936698046.crm	Manual	11/9/2007 11:05:41		OK
		6978551932.crm	Manual			UnableToConnect

Review connection status, last connection and download and automatic connection time.

## Data logger status

The screenshot shows the 'Data Files' section with a dropdown menu showing the date range '1/1/2007 00:24:00 => 9/1/2013 13:...' and the 'STYLITIS-10,V3.25 Status' section with a dropdown menu showing the date and time '21/1/2013 11:32:11 ...'. The status section contains several items with icons and text:

- Acquisition: OFF -> CHANGE (Warning icon)
- Clock offset: - (1 seconds) -> SET TIME (Warning icon)
- S/N: 041A0277 (Checkmark icon)
- Total memory: 4194304 bytes / 8192 pages (Checkmark icon)
- Free memory: 4189184 bytes / 8182 pages (Checkmark icon)
- Lasts for: 73638 Recs or 511 days 9 hours -> ERASE (Checkmark icon)
- Last file Nr: 4 (Checkmark icon)
- Power up at: 12-11-11 17:37:10 (Checkmark icon)
- Lithium battery voltage: (Checkmark icon)
- Power supply voltage not available (Checkmark icon)
- Alarms and Outputs: ENABLED -> CHANGE (Warning icon)
- Get Status from Logger (Radio button)

Below the status section is the 'Accumulator Status' section with a dropdown menu showing the date and time '21/1/2013 11:32:11 np'.

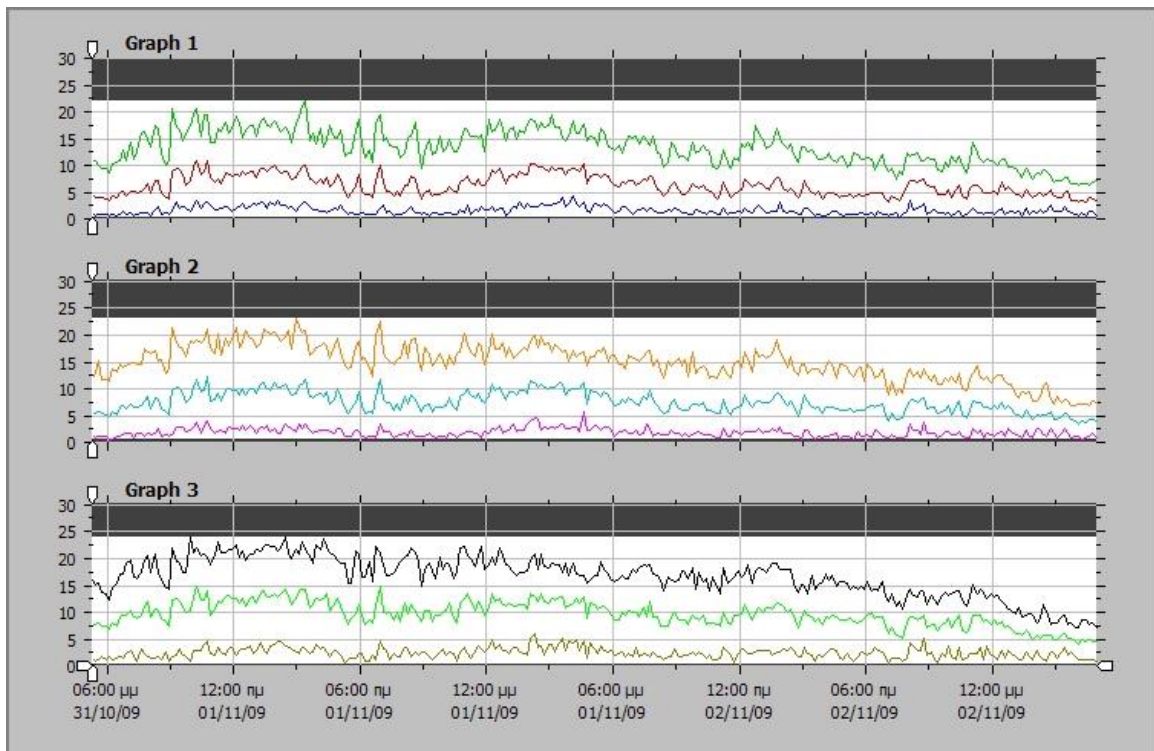
- Review logger status online and offline.
- Send commands online: change acquisition status, set time, etc.
- Informative icons aid in troubleshooting.

## Site messages

Number	Category	Source	Date	Type	Message	User
19	Warning	Opton	22/1/2013 17:04:39	Acquisition	Acquisition is Off.	Nikos
20	Warning	Opton	22/1/2013 17:04:39	Battery	Power supply voltage is low: 08.66	Nikos
21	Warning	Opton	25/1/2013 15:52:53	Acquisition	Acquisition is Off.	Nikos
22	Warning	Opton	25/1/2013 15:52:53	Clock	Internal clock is off by 3198 seconds	Nikos
23	Warning	Opton	25/1/2013 15:52:53	Memory	Data memory will last for 0010 DAYS	Nikos
24	Warning	Opton	25/1/2013 15:52:53	Card	Memory card missing.	Nikos
25	Warning	Opton	25/1/2013 15:52:53	Battery	Power supply voltage is low: 08.50	Nikos
26	Warning	Opton	30/1/2013 14:57:16	Acquisition	Acquisition is Off.	Nikos
27	Warning	Opton	30/1/2013 14:57:16	Battery	Power supply voltage is low: 08.64	Nikos
28	Warning	Opton	3/2/2013 11:03:13	Acquisition	Acquisition is Off.	Nikos
29	Warning	Opton	3/2/2013 11:03:13	Battery	Power supply voltage is low: 08.50	Nikos

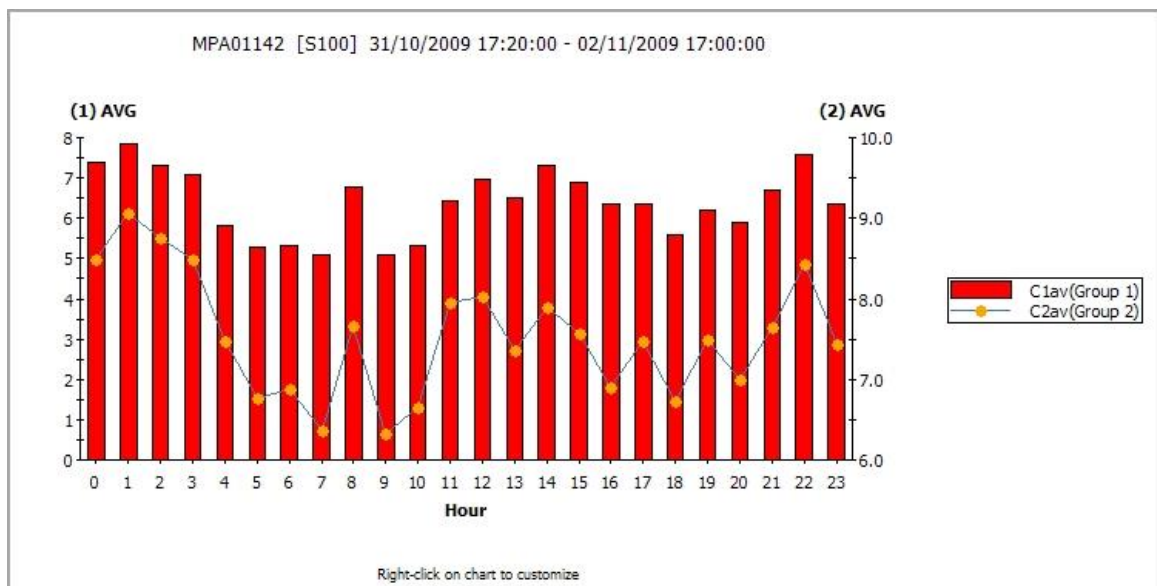
- View all messages by attributes and selectable filters.
- User selects which events will generate messages.
- Messages are categorized by emergency: Info, Warnings, Errors.
- Selectable message thresholds (i.e. battery voltage, etc.)

## Data file plot



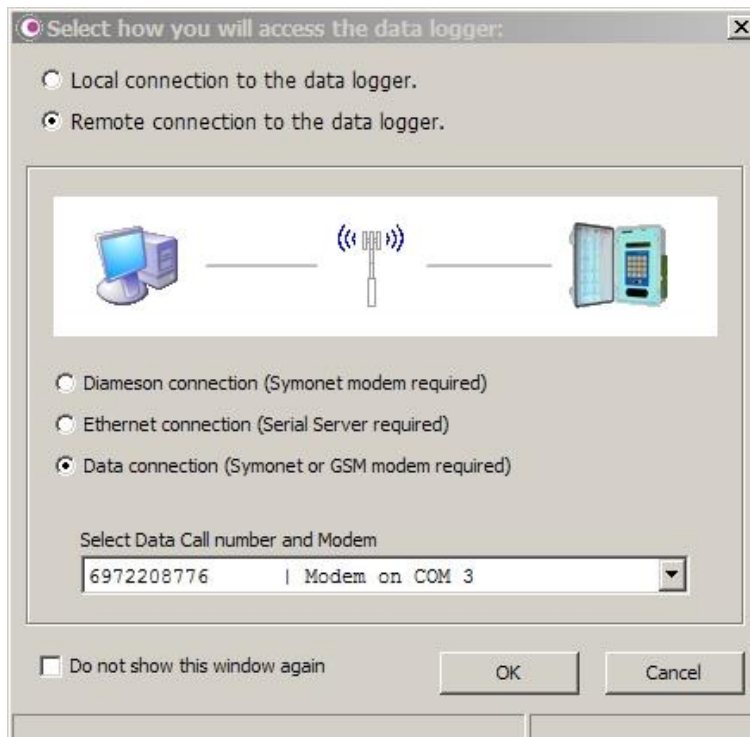
- Plot any channel (file column). Up to 3 separate tracks.
- Time-synchronized pan. Zoom on both axes.

## Data file statistics



- Statistics: per Year, Month, Day, Hour, Bin (values distribution).
- Functions: Minimum, Maximum, Average, Std. Deviation, Variance, Sum.

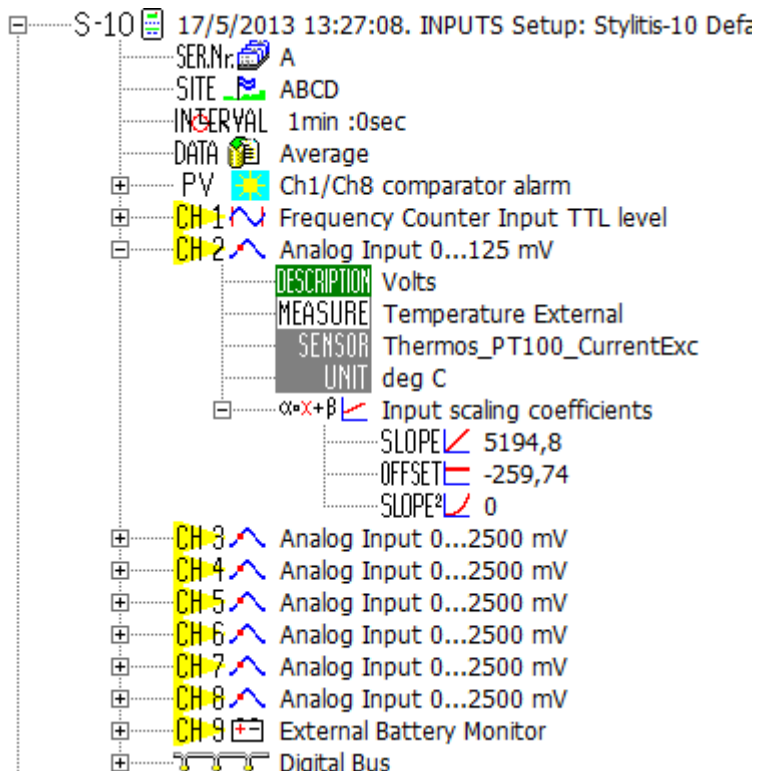
## Connection Assistant



- Automatic generation of connections from user input.
- Graphic presentation of connection attributes.
- Automatic scanning of local Ethernet devices.
- Automatic scanning of local COM ports.

- Existing connections summary for easy selection.

## Data logger setup



- Graphical or tabular data logger programming.
- Easy sensor selection from library.
- Communication Setup of the internal modem/ Ethernet module or the external Symonet modem.

## ADDITIONAL FEATURES

- Review recent *data files* and site *activity* at a glance: View the site's *properties*, the location's *weather* and position on *map*.
- Perform basic data logger *tasks* from a central point: *Connect*, view logger's *setup*, start data *acquisition* and *download* data file(s).
- View the memory card's directory, along with the files' size, start and end date. Select one or more from the directory to download.
- Review all *site files* in tabular form with selectable filters, columns and attributes.
- Besides plot and statistics, other *offline data file management* tools are also available:
  - *Process* data files and verify their *integrity*: check for *missing/duplicate* records or different *interval* between files. Split and concatenate data files to user- specified time periods.
  - Conversion tool: Easily convert sensor factors and data logging intervals. Create new file with the new factors, by also keeping the original one
  - Export data files to Excel, tab delimited and comma delimited files and to *WindRose* software for wind data analysis
- Automated single-click mass *import of data logger emails* from the mail server. Data files are automatically imported to their corresponding site folders, according to their Serial Number.
- On-line plot.
- Data retrieval and decompression via RS232/Ethernet connections and GSM/GPRS modems.
- Compatible with Windows 2000/ XP/ 2003/ Vista/ 2008/ 7.

## DATA LOGGER COMPATIBILITY

- **Stylitis-10.**
- **Stylitis-20**
- **Stylitis-41**
- **Stylitis-101**
- **Stylitis-50**
- **Stylitis-Power.**

## INTEGRATED SYSTEM

Part of a complete system, Opton 4 collaborates with other Symmetron products:

- **AutoConnect** – automatic connection and download software.
- **Diameson** – Server gateway software that allows on-line connections in GPRS networks.
- **Emmetron** – Software that consolidates measurement data, resources and events in a central database.