

Opton

DATA LOGGER OPERATING SOFTWARE

Opton is a Windows application designed for use with Symmetron's Stylitis data loggers.

Opton includes features such as management of data logger sites and easy sensor factor calculation. It allows users work with data loggers as simple as possible.

DATA LOGGER COMPATIBILITY

- Stylitis-10 (all versions).
- Stylitis-Power.
- Stylitis-50

INTEGRATED SYSTEM

Part of a complete system, Opton collaborates with other Symmetron products:

- **AutoConnect** – automatic connection and download software.
- **Diameson** – Server gateway software that allows on-line connections in GPRS networks.
- **Emmetron** – Software that consolidates measurement data, resources and events in a central database.

For detailed specs please refer to individual product data sheets.

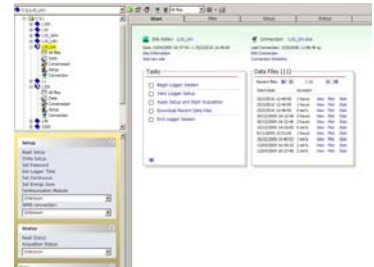
FEATURES

- Single-click selection of most operations.
- Graphical setup of data logger.
- Automatic calculation of Slope and Offset factors from sensor datasheet information.
- Mouse sensor selection from user-defined sensor libraries.
- Stored user-definable sensor configurations.
- Data organized in Windows folders with each folder representing a measurement site.
- Built-in data file viewer, graphs and statistics.
- On-line plot.
- Data retrieval and decompression via RS232/Ethernet connections and GSM/GPRS modems.
- Connection statistics.
- Built-in web server allows network computers access on-line data from Opton.
- Compatible with Windows 2000/ XP/ 2003/ Vista/ 2008.

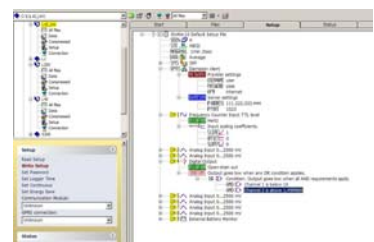
DATA

Opton data can be exported as:

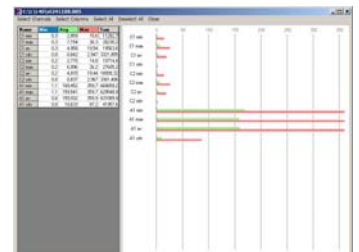
- Text files (ASCII) organized in columns.
- Graphs.
- Excel files.



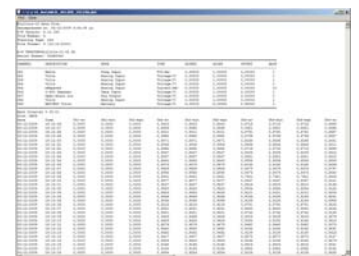
Quick Start page



Settings Tree



File Statistics



Data View

