

Solar Measurements

PHOTOVOLTAIC INSTALLATION MONITORING

To verify efficient operation, photovoltaic installations require monitoring, data logging and reporting.

Symmetron's monitoring system is simple and affordable.

COMPATIBLE DATA LOGGERS

- Stylitis-10
- Stylitis-101

COMPATIBLE SENSORS

- 2EN
- DeltaOhm
- Gill
- LiCor
- MetOne
- NRG Systems
- Riso
- RM Young
- Rotronic
- Skye
- Thies Clima
- Vaisala
- Vector Instruments
- Other.

COMPATIBLE SOFTWARE

- **Opton** – data and data logger management software.
- **Stylitis Explorer** – data and data logger management software.
- **AutoConnect** – operation automation software.
- **Diameson** – Server gateway software that allows on-line connections in GPRS networks.
- **Captum** – Real-time, data logger monitoring on the web.

For detailed specs please refer to individual product data sheets.

FEATURES

- Manual or Automatic operation.
- On-line web presentation.
- Long-term data available for:
 - Power
 - Energy
 - Temperature
 - Solar radiation
 - Wind speed
 - Wind direction
- Compatibility with all inverters.
- Supports RS-232, GSM, GPRS and Ethernet connections.
- Compatible with Windows 2000/XP/Vista/7.

READY SOLAR MEASUREMENT PACKAGES

PACKAGE 1

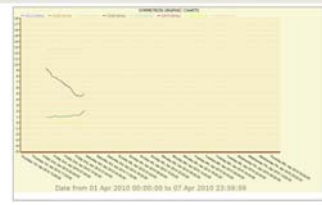
- Datalogger
- Pyranometer (Solar radiation)
- Thermometer (External temperature)

PACKAGE 2

- Datalogger
- Pyranometer (Solar radiation)
- Thermometer (External temperature)
- Three-phase energy meter (AC energy produced by the inverter).

ADDITIONAL OPTIONS

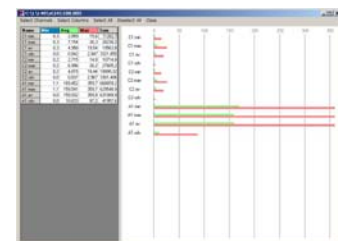
- Internal GSM/ GPRS modem or internal Ethernet module, built-in in the data logger for remote communication.
- Anemometer for activation of a relay (tracker) at high wind speeds.
- Autonomous power supply, with PV panel, charger and lead acid battery.
- Other sensors, such as wind vanes, surface thermometers for PV panel temperature, barometers, etc according to customer requirements.



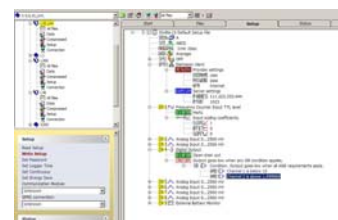
Captum real-time plot



AutoConnect



Statistics



Graphical setup

Solar Measurements

PHOTOVOLTAIC INSTALLATION MONITORING

A full system measures 8 or more parameters

