

PRESS 4
TO COMMUNICATE
Figure 1

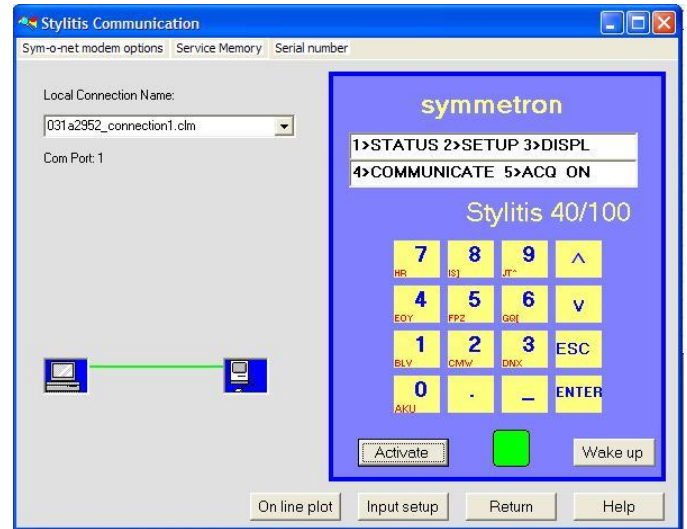


Figure 1

PRESS 1
TO DOWNLOAD DATA
Figure 2

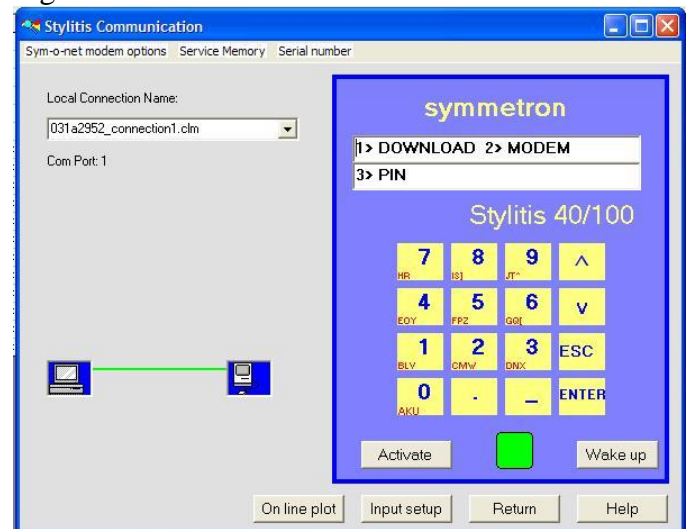


Figure 2

PRESS "ENTER"
Figure 3

If the Stylitis datalogger does not have a card or if its version supports linear flash, the current file will be downloaded.

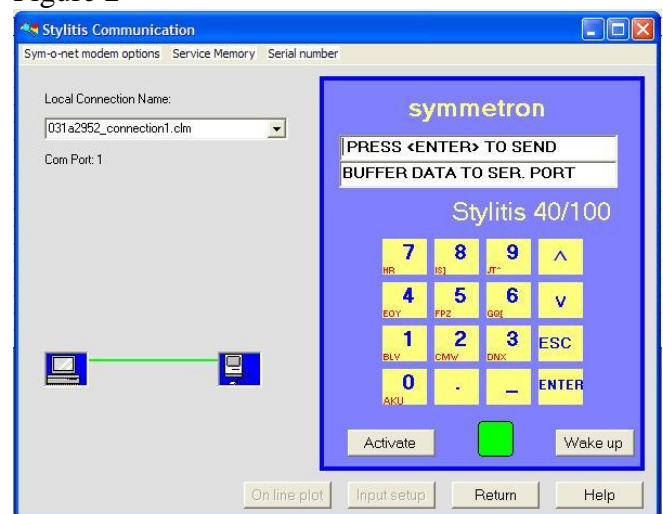


Figure 3

If the Stylitis datalogger has a **compact flash** card, then a new window will appear,

“Downloading options”, free to be moved to the desktop.

(Figure 4)

For the time you are in this «screen», in the datalogger’s screen, a series of dots appear steadily.

By selecting the first option

“Most recent file (x)” [where x the file number, which appears automatically] and the “OK” button

The current file in the card will close instantly and then this file will be downloaded. A new file with number x+1 has already been created. (*)

By clicking

“Show card directory”

i) A new 4KB file will be downloaded and the “FlashDir.txt” will be created in the site folder. (**)

ii) An additional fixed window will appear on the right of the keyboard (Figure 5) which presents:

Each file’s number:

“File#”

The file’s starting date:

“Start date”

Its size, in Kb:

“Size kB”

The number of the file’s first page in the compact flash:

“Start page”

While iii) the

“Downloading options” window

disappears and you return in the screen

PRESS 1

TO DOWNLOAD DATA

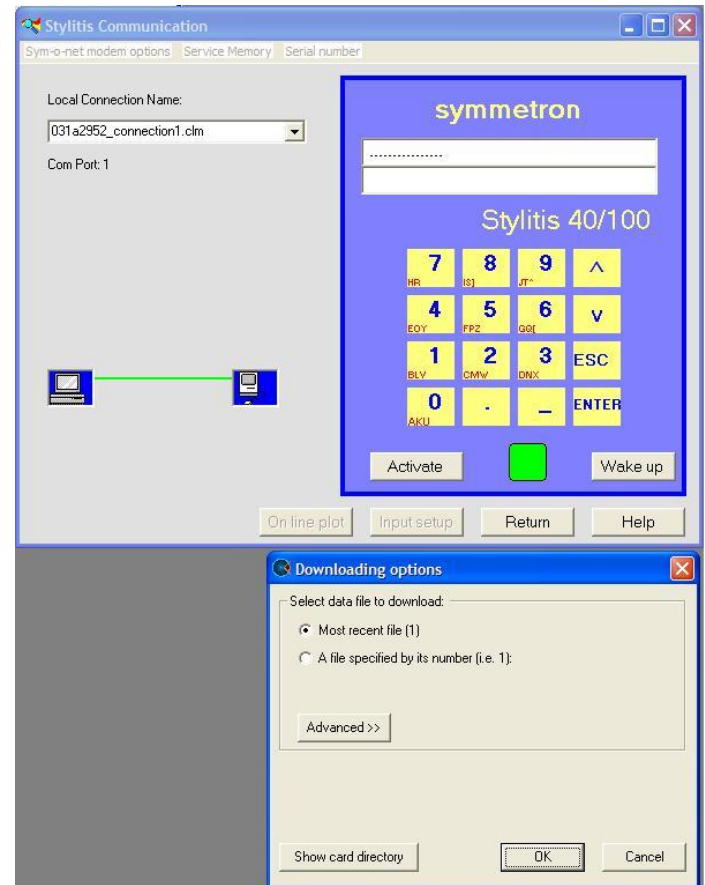


Figure 4

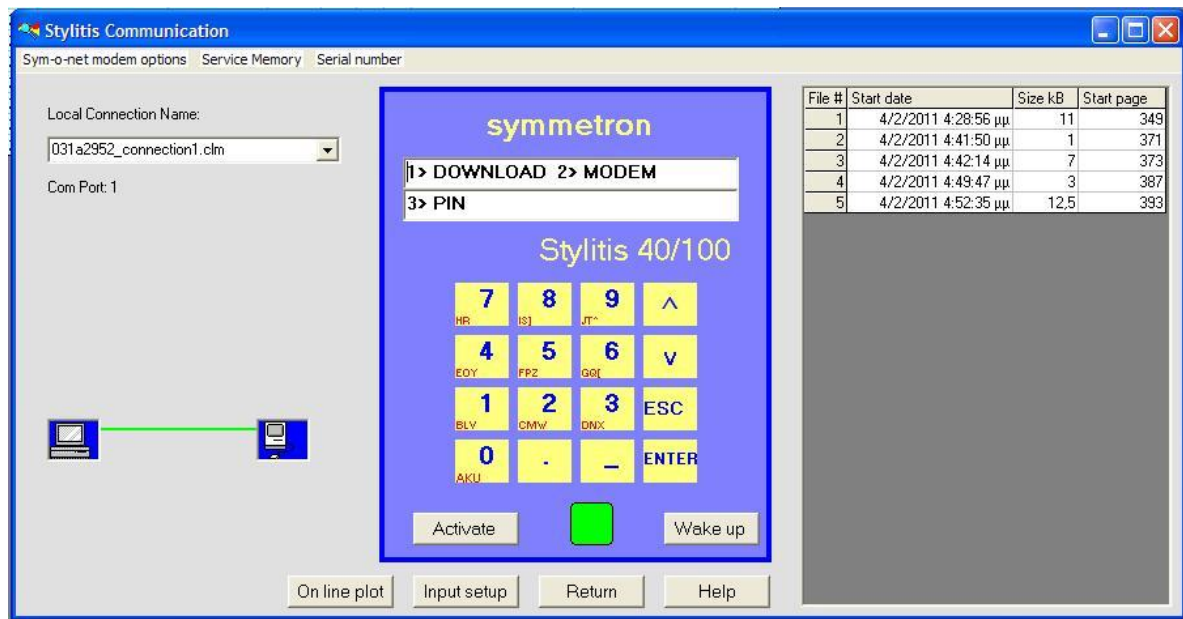


Figure 5

If, in the “Downloading options” window, you select “A file specified by its number (i.e. 1):” you can type the file number you wish in the corresponding field, eg ‘3’.

(Figure 6)

Only by selecting “OK” will the download of file 3 begin.

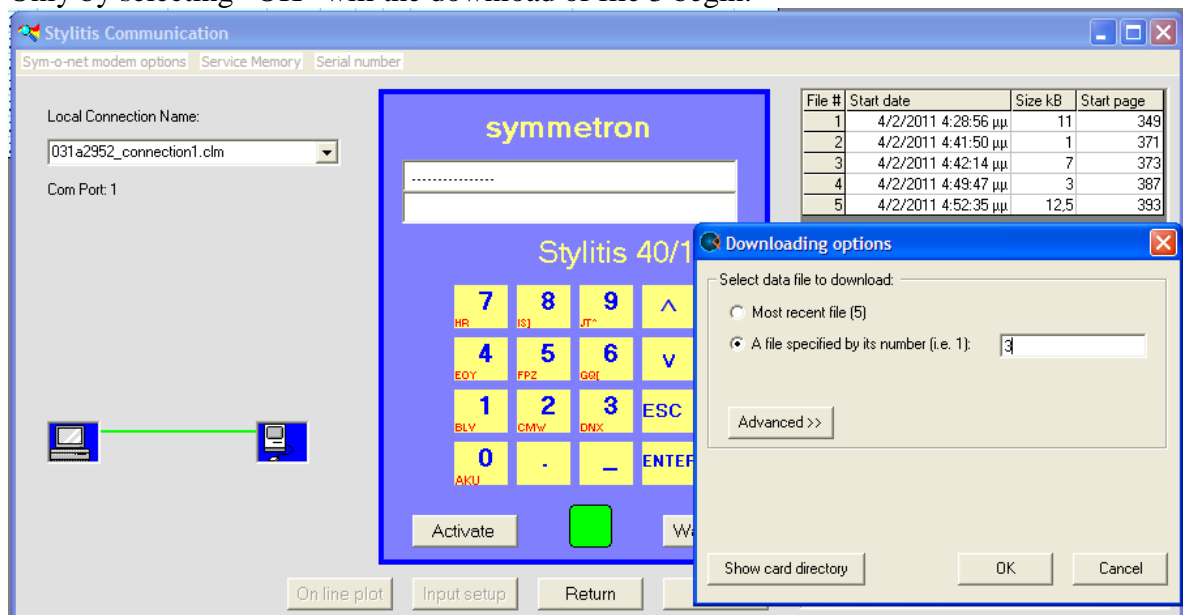


Figure 6

(*) This way, the problem of huge files created in cases with difficulties in communication, ceases to exist. Therefore, you have direct access in the last records, while the previous files remain available for download anytime you wish.

(**) The “FlashDir.txt” file is unique for each site (in the site folder). It is simply updated each time you select the “Show card directory” button. This way you can get a picture of the files without being connected (offline) as well.