

WindLook

WIND SPEED AND DIRECTION DISPLAY

The Symmetron WindLook has been designed for real-time wind speed and direction monitoring.

The WindLook accepts external Speed and Direction sensors. Indication is provided on easy to read 14 mm LED digits with adjustable illumination.

Direction indication on compass-type LED.

BENEFITS

- Choice of popular anemometers (not included).
- Choice of popular wind vanes (not included).
- NMEA \$WIMWV output (RS-232)
- MODBUS interface (RS-485).
- Optional analog voltage/current outputs.
- Optional RF Sat wireless peripheral allows remote sensing up to 10 km. Required additional equipment:
 - RF Sat wireless peripheral.
 - RF modem with 25 or 500 mW output at 868 MHz
 - For more information please refer to corresponding brochures.



Symmetron® is a registered trademark. Stylitis, Opton, Captum, Diameson, VeriVane, Thygro, Thermos, WindLook and Emmetron, are trademarks of the Symmetron Company. All other trademarks belong to their respective owners.

SPECIFICATIONS

- WIND SPEED
 - RANGE: 0 ~ 99.9 m/sec
 - DISPLAY: 3 digits.
 - RESOLUTION: 0,1 m/s.
 - ACCURACY: $\pm 0.1\%$
- WIND DIRECTION
 - RANGE: 0 ~ 360°
 - DISPLAY: 3 digits.
 - RESOLUTION: 0.1°.
 - ACCURACY: $\pm 1\%$
 - COMPASS STEP: 22.5°.
- PROTECTION: Overvoltage, inverse voltage.
- ENCLOSURE: Plastic PC, IP66 150x125x60 mm. Wall mounting brackets included.
- CONNECTION: screw terminals via bottom IP67 glands.
- OPERATION TEMPERATURE: -30° ~ +70°
- POWER SUPPLY: 8 ~ 30 VDC, ≤ 1.5 W
- WARRANTY: 2 years.
- Selectable wind speed units:
 - m/sec
 - Km/h
 - miles/h
 - Knots
- External anemometer types:
 - NRG #40/40H
 - Second Wind C3
 - Young 5103 (includes wind vane)
 - Davis 6410 (includes wind vane)
- External wind vane types:
 - Potentiometer wind vanes, with resistance 1k Ω or greater.
 - Example: NRG #200P
- Selectable analog outputs (optional):
 - 0...5V.
 - 0...10V.
 - 4...20mA.
 - 0...20mA

Order codes

- Without analog outputs: 002.000.0101
- With analog outputs: 002.000.0102



Τηλ: 2106034002

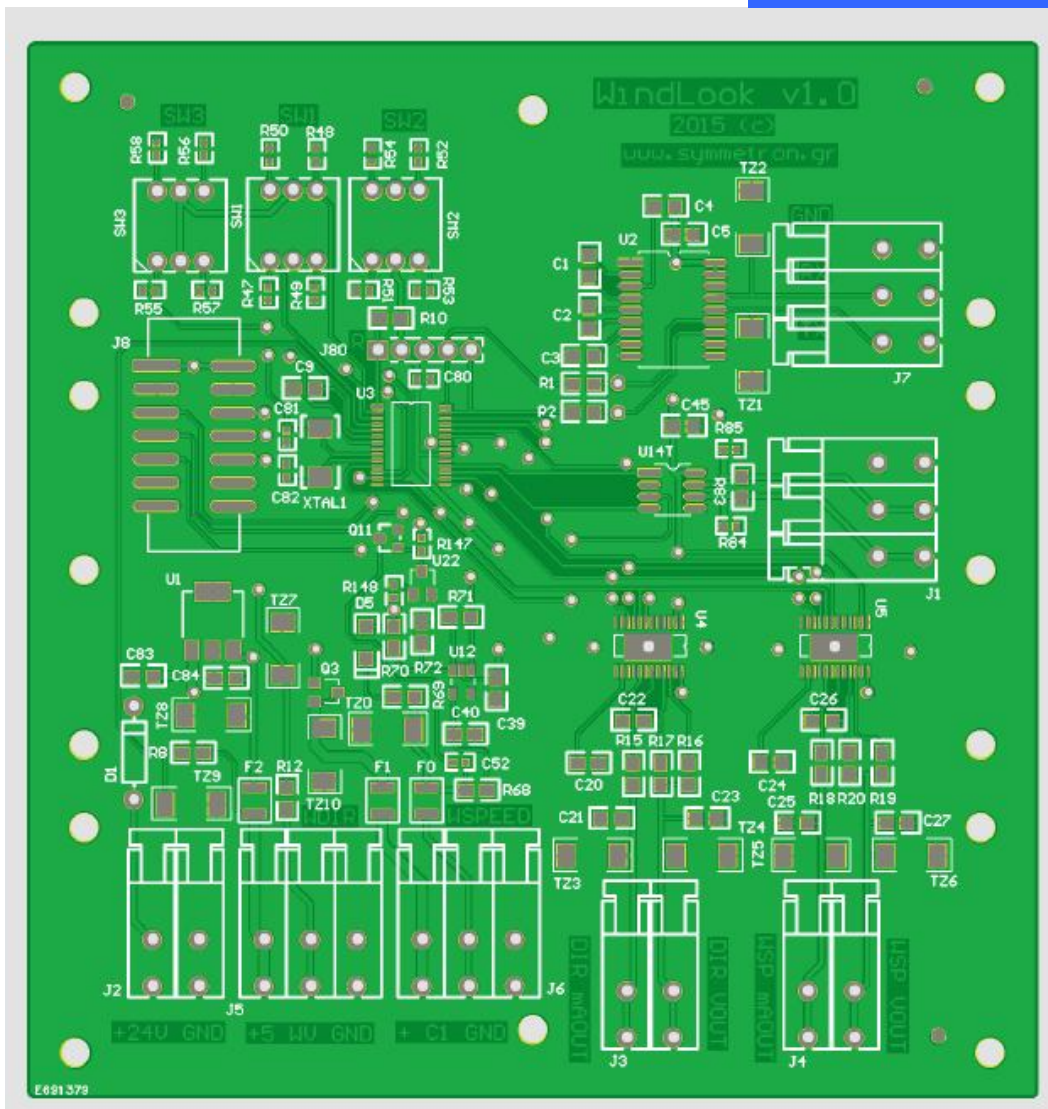
Fax: 2106034003

<http://www.symmetron.gr>

0515

WindLook

WIND SPEED AND DIRECTION DISPLAY



SWITCH 1 FOR WIND SPEED DISPLAY UNITS			
SW 1			
0		m/sec	
1		Km/h	
2		Miles/h	
3		Knots	

SWITCH 2 FOR ANEMOMETER TYPE SELECTION			
SW 2	A/M model	slope	offset
0	#40/C3 (SIN)	0,765	0,35
1	#40H (TTL)	0,765	0,35
2	5103 (SIN)	0,098	0
3	6410 (TTL)	1	0

INPUTS		
SUPPLY INPUT		
J2	+24V	Supply +
	GND	Supply -
SENSORS INPUT		
J5	+5V	Supply for wind vane (optional)
	WV	Wind vane signal
	GND	com
J6	+	Supply for anemometer
	C1	Anemometer signal
	GND	com

ANALOG OUTPUT TYPE		
Wind direction		
J3	DIR mAout	Direction Current output
	DIR Vout	Direction voltage output
Wind speed		
J4	WSP mAout	Speed Current output
	WSP Vout	Speed voltage output

ANALOG OUTPUT RANGE: (place jumper)		
SW3	0	4...20mA or 0...5V
	1	0...20mA or 0...10V

WindLook

WIND SPEED AND DIRECTION DISPLAY

Typical connection methods

Direct wired connection to the sensors:



Wireless remote connection to the sensors:



Examples wind Speed and Direction real-time display.

LEGEND:
Orange: Wireless remote link
Blue: Wired local link